

# Family Centred Practice

Talking to Families

Listening to Families

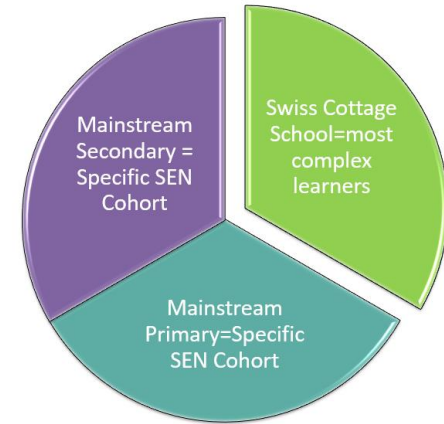
Working with Families

[www.swisscottage.camden.sch.uk](http://www.swisscottage.camden.sch.uk)

@SwissCottageSch @MariaFSchultz @PateVijita



Swiss  
Cottage  
School  
Development &  
Research Centre



Creativity  
Problem Solving  
Discovering Talents  
Preparation for Adulthood  
Flexibility of Thought  
Respect & Dignity  
Holistic  
Unlocking Potential  
Equal Citizen  
Rights of the Child  
Sense of Self  
Building Connections



Curriculum Vision



# School Culture and Ethos

## Values-Led

Respect, Integrity,  
Positive Attitude

## Positive Culture

Can do approach  
High aspirations

## Learning Culture

Research Led      Reflective enquiry  
**Learning from one another:**  
staff, families, networks

## Power of Partnership

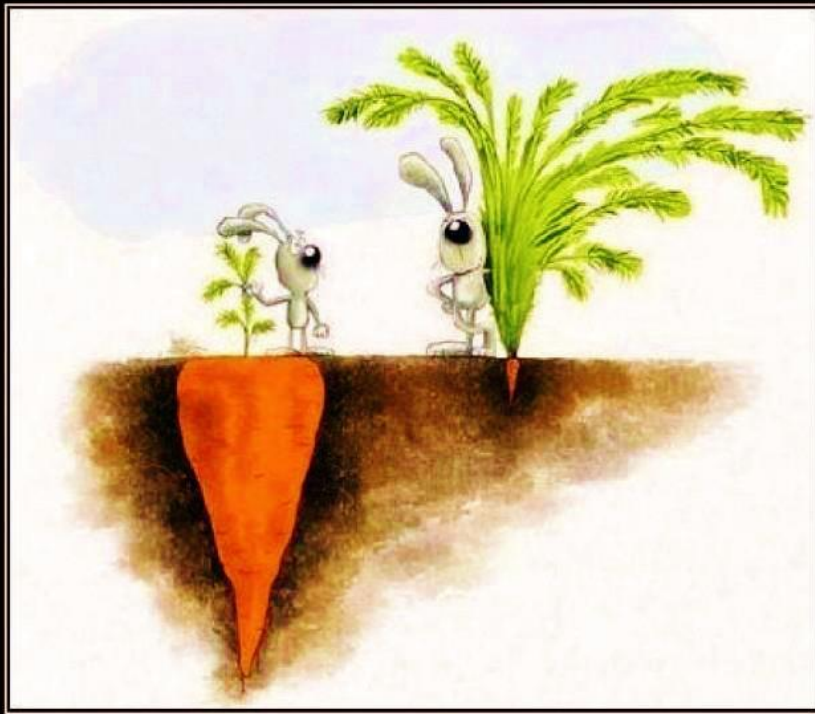
Working together to promote  
integrated provision



- Commitment to family partnership
- Authentic voice for families
- Enabling and empowering through their use of school information

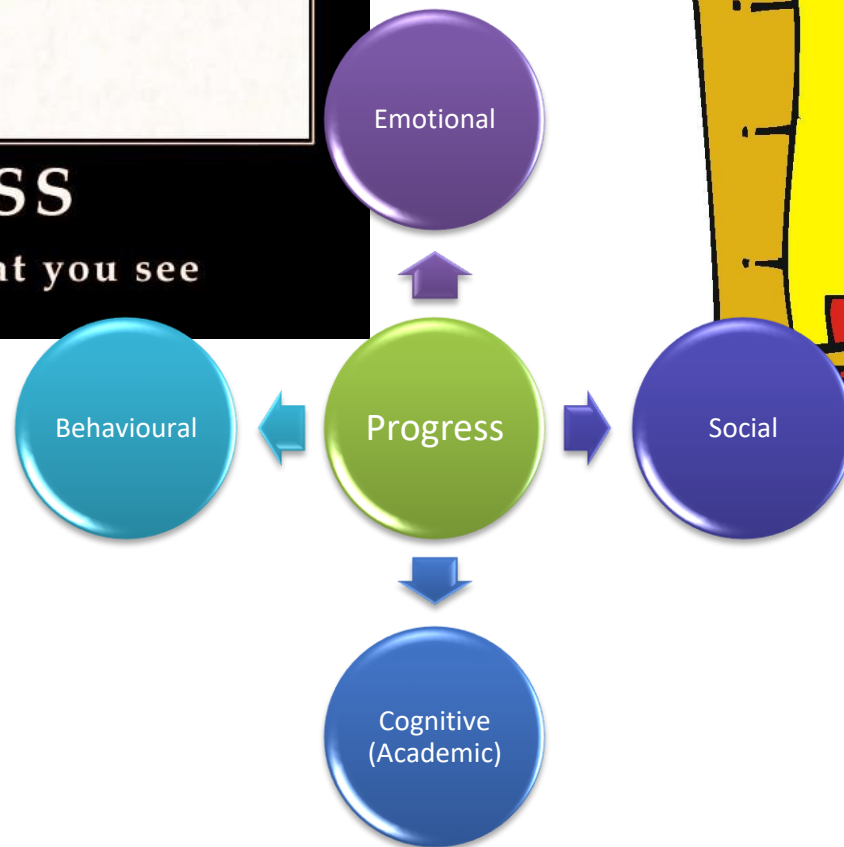


- Formal and informal processes to enable personalised partnerships by class team



**SUCCESS**

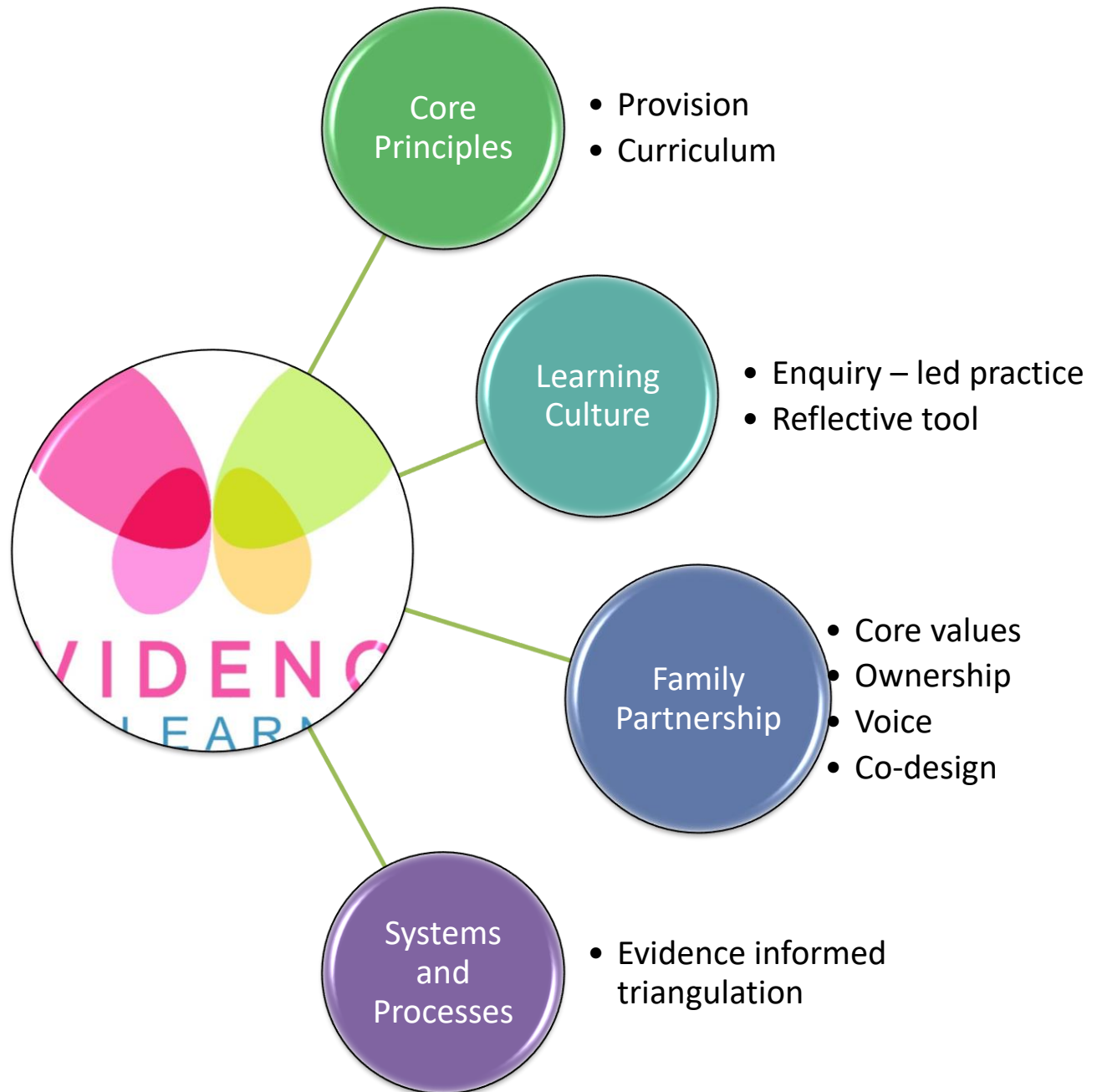
it's not always what you see





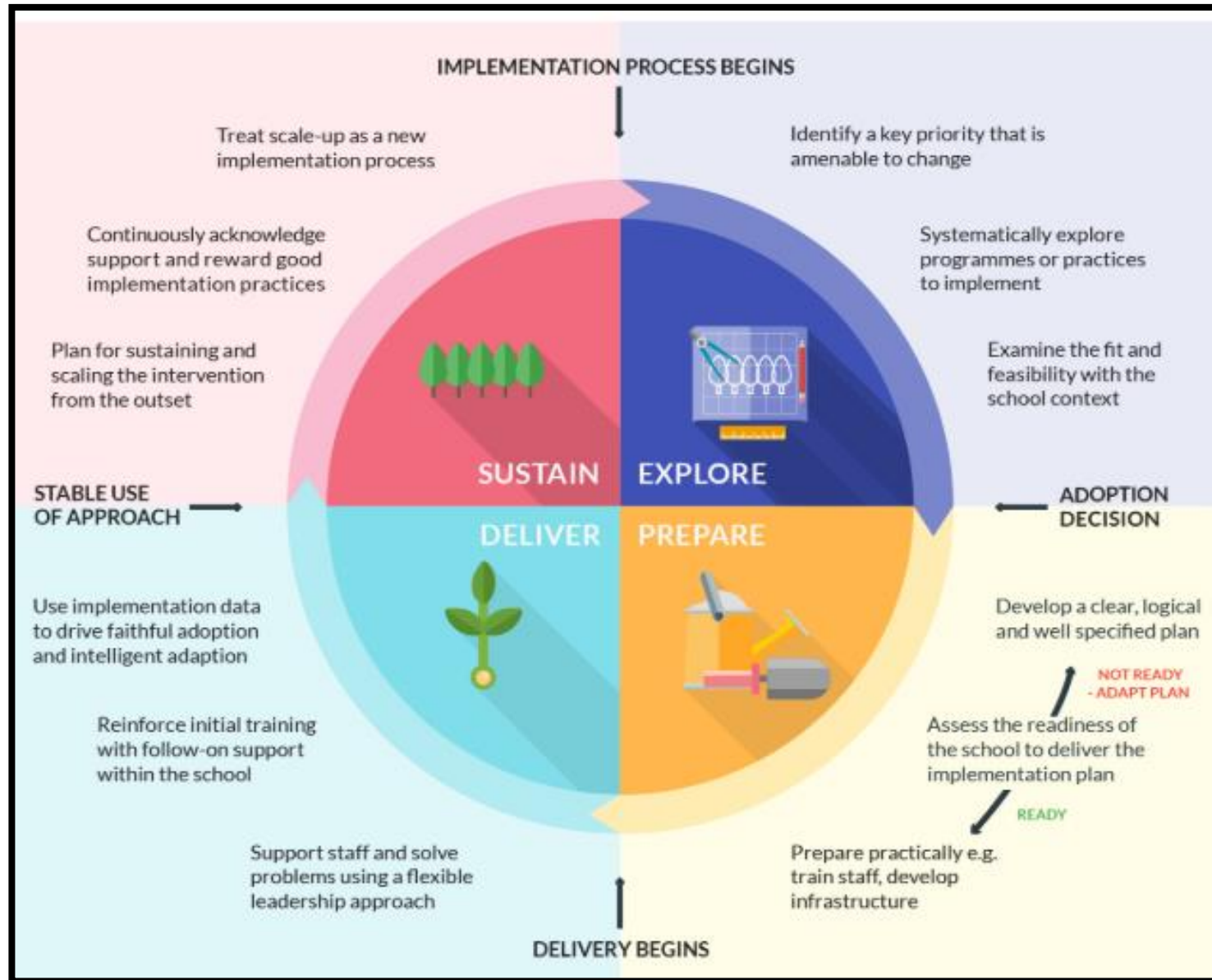
We were searching  
for a system that  
could meet 4  
priorities

EfL is the answer and  
has empowered  
families and  
practitioners through  
the reflective enquiry  
model.





# School Improvement Cycle

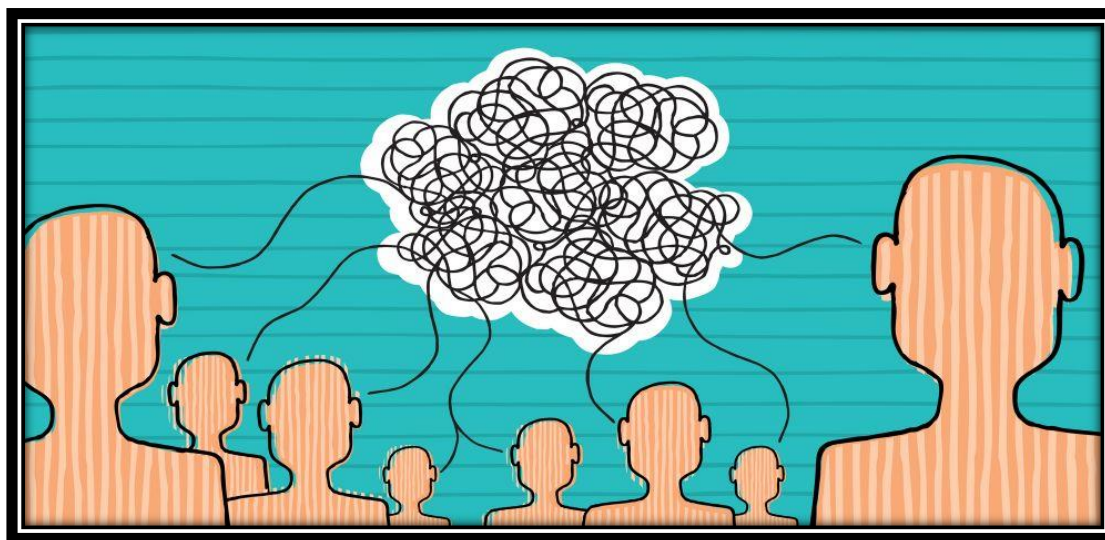


Parents Carers Families: at the heart of our strategic planning and change for EFL

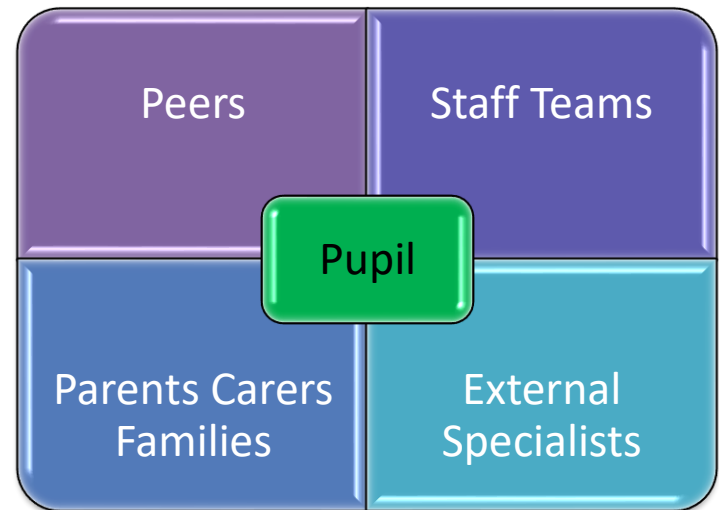


As a school we feel the benefit in having families at the heart of provision planning and design.

Aligning our strategy to their needs ensures the pupils benefit fully.







EfL is the tool that systematically allows us all to engage in reflective enquiry together – connected through our pupils and their learning journey.



That foundation of family collaborative working means our response to the pandemic was joint. We problem solved together.

Open dialogue  
Joint planning  
Ever evolving model  
personalised to our community's needs.





Maria Schultz

Co-opted Governor

Parent Participation Practitioner for the KIDS Charity (Advocacy and Parent Participation) and Co-Chair Camden Special Parents Forum. Member of NNPCF, Camden Autism Partnership board, Camden Local Offer steering group, Camden Inclusive Employment Forum and Camden Parents Reference Group for Schools Transport. Previous 8 years of experience in intensive care nursing and 6 years in NHS Project management (Royal Free Hospital).



Sadia Mahmud-Marshall

Co-opted Governor

20 years experience in international development with strong focus on child rights, youth and gender equality. Currently an independent consultant working with UN agencies, EU, international NGOs, Trusts and Foundations. Key areas of expertise includes designing, managing and evaluating programmes for socially excluded children and youth including street-connected children, minority and refugee children, children with disabilities and victims of the worst forms of child labour and modern slavery. Mother/carer of a child with disabilities and SEN.